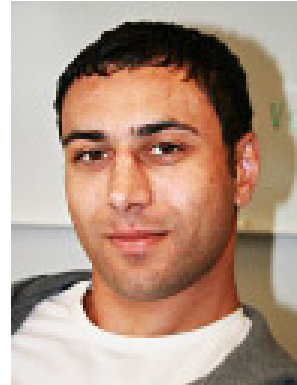


Daniel Patel



Expressive Visualization and Rapid Interpretation of Seismic Volumes

Thu., 2009-10-27, 17h00–

Store Aud. (room 2144), Høyteknologisenteret (data blokk),
Thormøhlensgate 55

Abstract:

This thesis investigates how computer assistance in producing high-quality visualizations and in interpretation can result in expressive visualization and rapid interpretation of seismic volumes. Expressive visualizations represent the seismic data in an easily digestible, intuitive and pedagogic form. This enables rapid interpretation which accelerates the finding of important structures.

